



PAPEX Shared Application Services (P-SAS) provides corporate procurement groups with a powerful tool to manage the newsprint purchases for one or many print facilities against multiple supplier contracts. Suppliers also have access to sales orders, shipments and paper performance data for all of their customers in one location. The financial modules have proven to be invaluable for all partners.



Centralized purchasing cycle

As trading partners, buyers and suppliers of newsprint use the same information - contracts, orders, deliveries, paper performance, pricing and payments - for both strategic decisions and daily transactions. P-SAS is designed to optimize centralized access to this data, reducing duplicate processing and simplifying reconciliation.

Powerful reporting in seconds

P-SAS is scalable to effectively manage newsprint purchases and inventory for one, fifty, a hundred or more business units under one corporate account. Immediate consolidated reporting provides valuable analysis of order and delivery status, inventory levels and paper performance.

Timely financial reports support efficient month-end processes and accurate financial audits.

Security

P-SAS security is a partnership. PAPEX is vigilant about keeping your data safe and secure while you have full control over granting authorized access to your corporate account. Your confidential transactions are protected by a company with operational integrity at its core.





BUYING GROUPS AND PRINT FACILITIES

Simplifying the procurement process

Contracts

Supplier contract details and payment terms are easily created for one or more grades.

Fulfillment and off-contract purchases are automatically updated as orders are placed.

Order Generation and Management

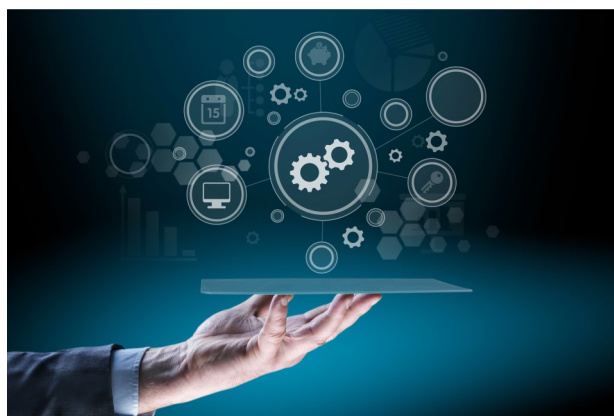
Create one consolidated order for each supplier with multiple destinations or place a separate order for each print facility. Orders are sent electronically to suppliers to acknowledge by confirming product details, quantity and delivery schedules in P-SAS.

Pricing

Prices for each product – including discounts, surcharges and exceptions - are used to calculate supplier payments based on deliveries. Enter transfer prices to manage billing to business units. Pricing history is maintained for analysis.

Payment and Billing

Contract prices are applied directly to deliveries in P-SAS, eliminating the need for supplier invoices and reconciliation. Send payment reports to suppliers as notification of pending payments and generate billing statements for print facilities using transfer prices.





CONSOLIDATED OPERATIONS

Planned Usage

Annual projected usage for each business unit can be adjusted to reflect seasonal trends and planned changes. Actual monthly usage is automatically updated for comparison against forecasts.

Allocation by Print Facility

Corporate procurement assigns monthly paper volumes by supplier or mill and print facilities specify their required roll size mix. Transfer allocations to the purchase order module to generate individual orders for each print facility or efficiently consolidate into corporate-level orders.

Delivery and Receipt Status

P-SAS leverages electronic advance delivery notices from suppliers and warehouses to eliminate duplicate data entry. Corporate groups have an immediate view of receipt status at each business unit and create payment and billing notifications based on actual weight shipped. Suppliers view shared delivery details to support efficient shipment discussions.

Inventory Analysis

Print facilities can report their daily, weekly or monthly usage by product in P-SAS, providing a reliable basis for order planning and inventory analysis.

Paper Performance

Daily web breaks entered into P-SAS by each print facility or exported from the unit's inventory management system are incorporated into consolidated paper performance reports for analysis.

Integration with XTrack

Use P-SAS as an independent application for managing orders, shipments, receipts, inventory summary and payments. Or integrate it with our XTrack roll-level inventory management system installed at each print facility. Electronic purchase orders and deliveries are downloaded to XTrack with receipts, usage and paper performance details exported back to P-SAS, giving the corporate team an instant view of inventory at all of their print facilities.





SUPPLIERS Bringing customers closer

P-SAS offers a real-time view of contract fulfillment status. Orders are sent to you electronically in the papiNet industry standard for integration into your order management system. Customer service representatives are able to track orders, shipment status and receipts at a glance. Technical service specialists have access to consolidated paper performance data as soon as your customers send it to P-SAS.

Shared Orders and Deliveries

You and your customers see exactly the same order and delivery information in P-SAS. Order acknowledgements, including weight and delivery schedules, are accepted electronically by P-SAS or can be entered directly, immediately notifying your customer of their order status or proposed changes. Electronic mill and warehouse deliveries sent to P-SAS allow buyer and supplier partners to view shared shipment details together.

Pricing

P-SAS supports a payment process allowing buyers to pay based on delivery manifests. The need to produce and reconcile invoices is eliminated, resulting in a significantly reduced payment cycle.

Expanded Sales Opportunities and Analysis

Buyers that share print site usage in P-SAS provide you with the ability to co-manage inventory and offer the competitive advantage of replenishment service. Address potential quality concerns immediately using timely paper performance statistics in P-SAS.

